



AUTODESK® BIM COLLABORATE PRO

Powerful Collaboration in AEC Industry

Andrew Aung

Data Scientist & Educator

Agenda

BIM Collaborate Pro

- **Industry Context**
- **BIM Collaborate Pro**
 - Overview
 - Key Capabilities
 - Collaboration
 - Communication
 - Coordination
- **Resources**
- **Q&A**

Business needs are changing

Stay competitive and differentiate your business with cloud technology



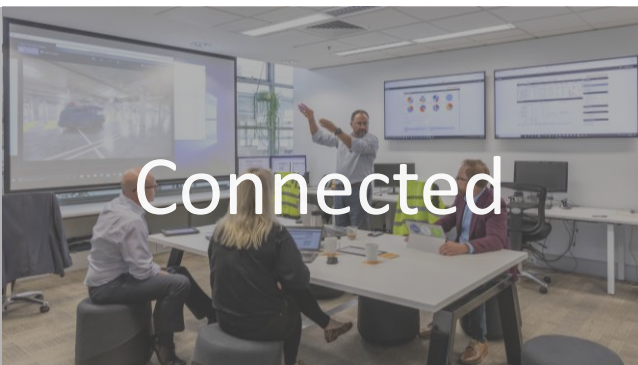
With the cloud, your team can work from anywhere, on anything, with insight. So you can stay resilient, adapt to changes, and keep projects moving.

A connected ecosystem across the project lifecycle is possible with organized data, structured access, and coordinated exchange and handover.

Project management and resource allocation becomes easier with tools for risk mitigation, resource prediction, and control.

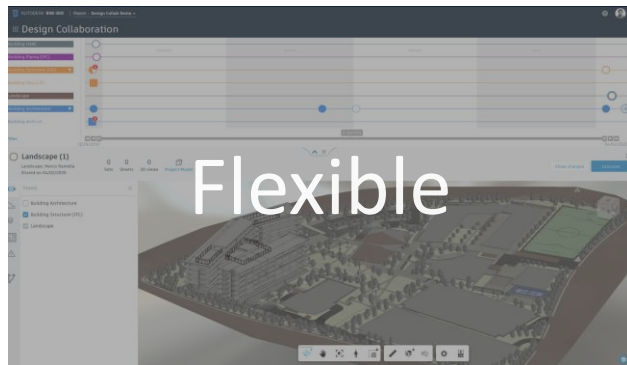
Design smarter, build faster

Enable data-driven collaboration across all teams and projects



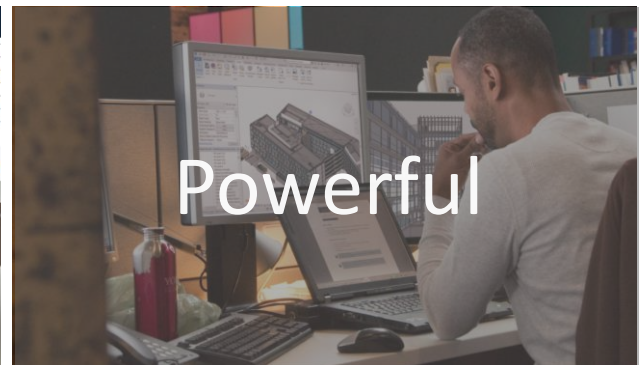
Connected

Connect teams, tools, and data to maximize efficiencies and avoid rework



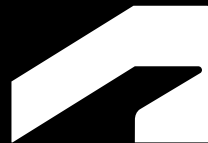
Flexible

Work on horizontal and vertical projects, collaborating in design tools anytime, anywhere



Powerful

Secure, centralize, and analyze your data for powerful, actionable insights

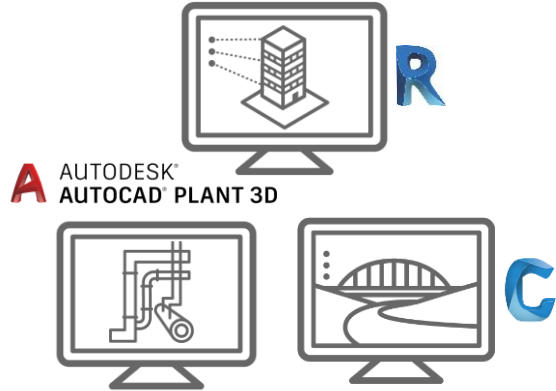


BIM Collaborate Pro

Anytime, Anywhere AEC Collaboration

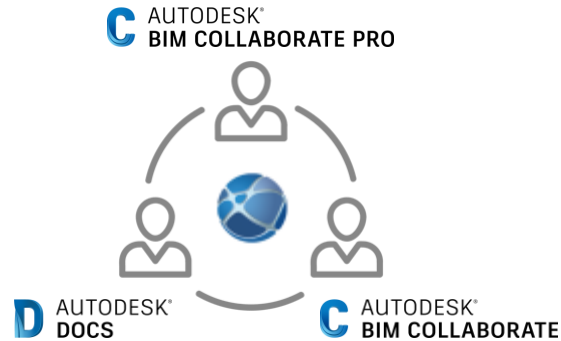
What is BIM Collaborate Pro?

A platform for the whole project team



Work anytime, anywhere in **Revit**,
Civil 3D & Plant 3D

Designers (Authors)



Centrally manage your data in a
unified platform

Reviewers



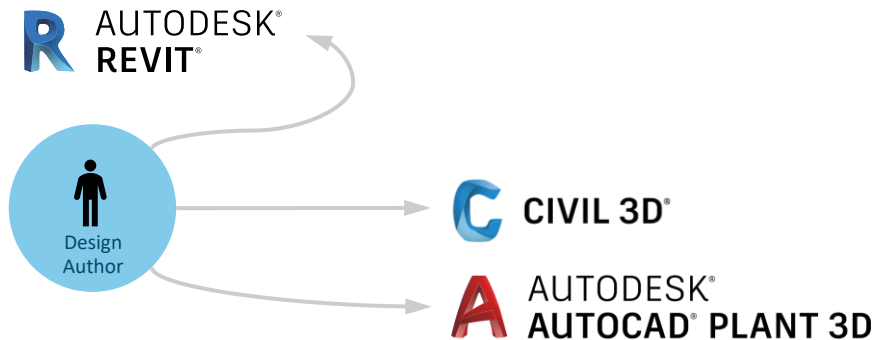
Share feedback, view insights, and detect
clashes **on any device**

Decision Makers

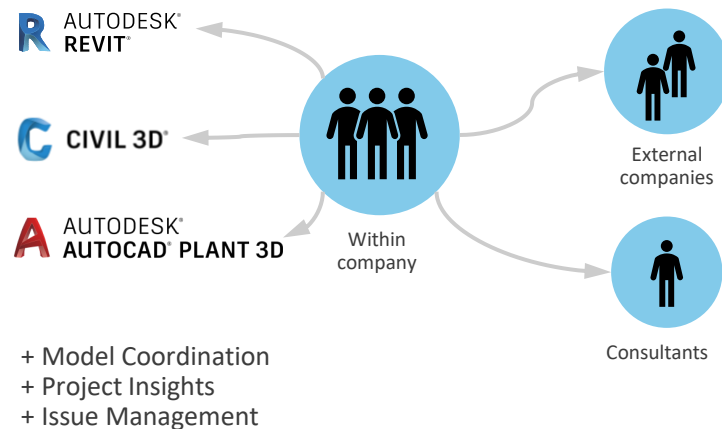
Why BIM Collaborate Pro?

Co-author projects across disciplines and tools

For designers who need
multi-product access



The best solution out there for
co-authoring in Revit, Civil 3D, & Plant 3D



Why BIM Collaborate?

Review & coordinate design projects



Centrally manage your data in a
unified platform

Reviewers



Share feedback, view insights, and detect
clashes **on any device**

Decision Makers

And there's more:

- ✓ **Understand the latest changes** to the project model in a combined view
- ✓ Manage design data exchange with **defined swim lanes**
- ✓ Deliver high quality models with **automated clash detection**
- ✓ **Create and track issues** to manage change requests
- ✓ **Automatically publish updates** as per project requirements

The Evolution of Design Collaboration

Team
Single location
Firewalled

- Limited Collaboration
- Daily BIM Management
- No Internal Activity Tracking

Localized Central Model

User 1

User 2

User 3

Enterprise
Multiple locations
Firewalled

- Single Firm
- Expensive Hardware
- Slow Data Exchange



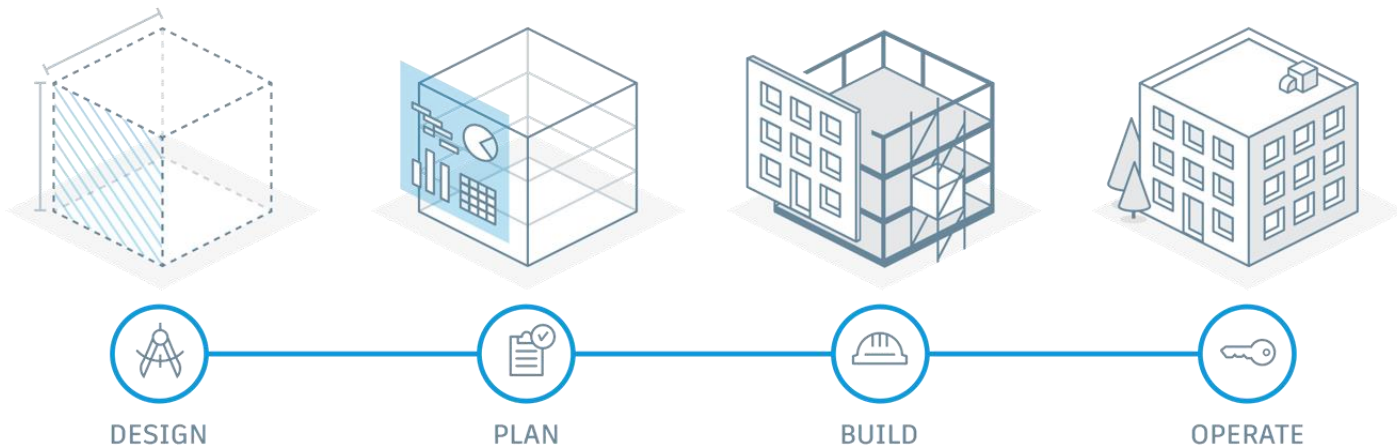
Project
Multiple companies
Multiple locations
Managed access

- All Project Stakeholders
- Extensive Tools for Project Management and Delivery

 **AUTODESK®**
BIM COLLABORATE PRO



AUTODESK CONSTRUCTION CLOUD™



A Unified Platform for AEC Project Delivery

AUTODESK® BIM COLLABORATE



Docs

- 50+ file formats
- Robust permissions
- 2D and 3D version comparison
- Issues and markups



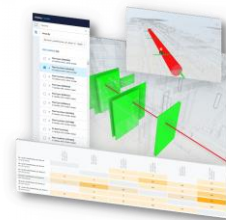
Design Collaboration

- Set publishing
- Package review and distribution
- Visual version comparison
- Design issues



Model Coordination

- Automated clash detection
- Clash grouping
- Coordination issues



AUTODESK® BIM COLLABORATE PRO



Docs

- 50+ file formats
- Robust permissions
- 2D and 3D version comparison
- Issues and markups



Revit Cloud Worksharing

- Anytime, anywhere Revit collaboration
- Controlled cloud worksharing



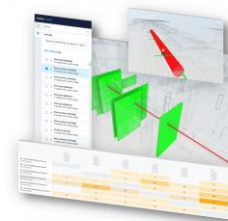
Design Collaboration

- Set publishing
- Package review and distribution
- Visual version comparison
- Design issues



Model Coordination

- Automated clash detection
- Clash grouping
- Coordination issues



AUTODESK® BIM COLLABORATE



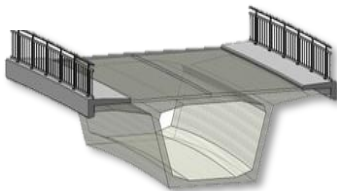
Docs

- 50+ file formats
- Robust permissions
- 2D and 3D version comparison
- Issues and markups



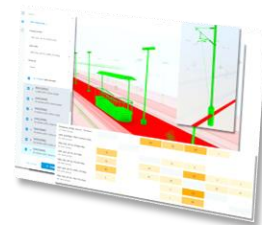
Design Collaboration

- Set publishing
- Package review and distribution
- Visual version comparison
- Design issues



Model Coordination

- Automated clash detection
- Clash grouping
- Coordination issues



AUTODESK® BIM COLLABORATE PRO



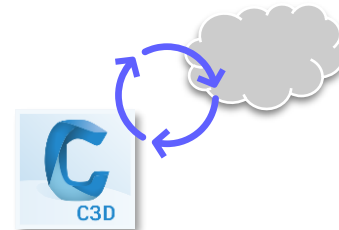
Docs

- 50+ file formats
- Robust permissions
- 2D and 3D version comparison
- Issues and markups



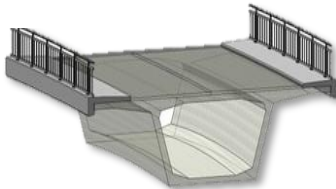
Collaboration for Civil 3D

- Civil 3D projects managed in the cloud
- Create & Consume Data Shortcuts
- Automated File Locking



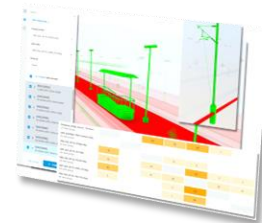
Design Collaboration

- Set publishing
- Package review and distribution
- Visual version comparison
- Design issues



Model Coordination

- Automated clash detection
- Clash grouping
- Coordination issues

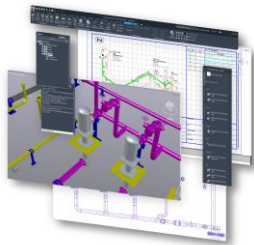


AUTODESK® BIM COLLABORATE



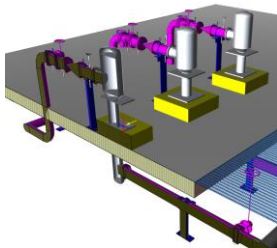
Docs

- 50+ file formats
- Robust permissions
- 2D and 3D version comparison
- Issues and markups



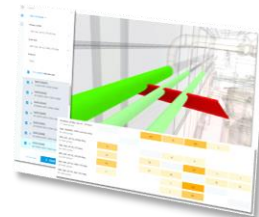
Design Collaboration

- Set publishing
- Package review and distribution
- Visual version comparison
- Design issues



Model Coordination

- Automated clash detection
- Clash grouping
- Coordination issues

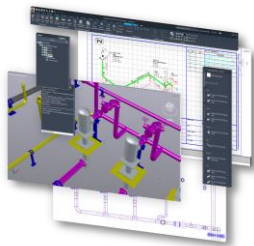


AUTODESK® BIM COLLABORATE PRO



Docs

- 50+ file formats
- Robust permissions
- 2D and 3D version comparison
- Issues and markups



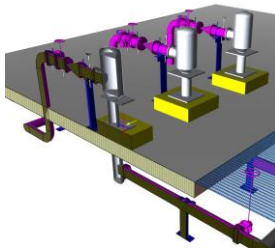
Collaboration for Plant 3D

- Project Sharing and Review
- Streamlined Approval Workflows
- Simplified Administration



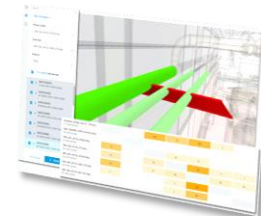
Design Collaboration

- Set publishing
- Package review and distribution
- Visual version comparison
- Design issues



Model Coordination

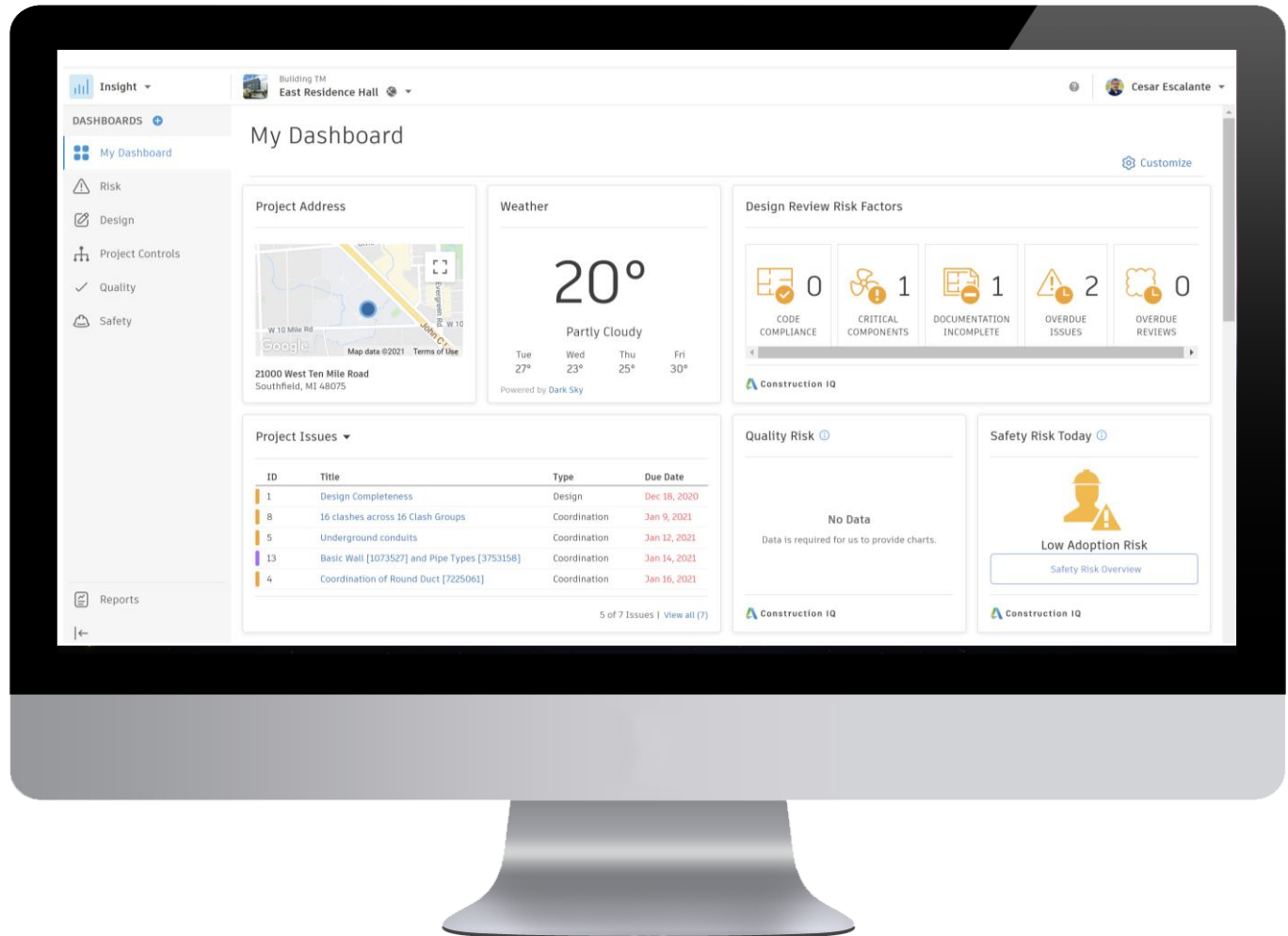
- Automated clash detection
- Clash grouping
- Coordination issues





Insight

- Data Driven Reports
- Project Dashboards
- Prediction Analytics
- Informed Decisions





Collaboration



Communication



Coordination

Collaboration

Anywhere, Anytime, Anyone

- Extend worksharing to virtually anywhere
- Enable easy, secure multi-firm concurrent authoring

Connects project teams with centralized access to BIM project data in the cloud, with no need for costly IT setup

Project Files

Folders Holding area

For the Field

- As-Built
- Bid Packages
- Record Set

Project Files

- Management
- Models
 - Architecture
 - Civil
 - Coordination
 - Designer
 - Landscape
 - MEP
 - Shared
 - Structure
 - Systems Analysis
- Photographs
- Presentations
- Renderings
- Revit Upgrade Report
- Specifications

Upload files

Publish

Name ^	Description	Version	Marku
<input type="checkbox"/> Conceptual	--	--	--
<input type="checkbox"/> Consumed	--	--	--
<input type="checkbox"/> ACAD-X-BASE-ARCH-MODEL-EXPORT.dwg		V1	
<input type="checkbox"/> LTU Housing - Arch.rvt		V17	
<input checked="" type="checkbox"/> LTU Housing - Site.rvt		V6	

Collaboration

Robust Permissions

- Manage access for internal and external users
- Permissions configurable by user, role or company

Control worksharing and design deliverable exchange with the assurance that the right information is in the right hands throughout your project

The screenshot displays the Autodesk Construction Cloud interface. The top navigation bar shows 'Docs' and 'East Residence Hall - TM Internal'. The left sidebar contains a menu with 'Files', 'Reviews', 'Transmittals', 'Issues' (selected), 'Reports', 'Members', and 'Settings'. The main content area is titled 'Settings' and has tabs for 'Types', 'Custom fields', 'Permissions' (active), and 'Root causes'. A blue button '+ Add permissions' is visible. Below it, an information icon and text state: 'Members can always view Issues assigned to them, either individually or through a role or company. [Learn more »](#)'. A table lists roles with expandable permissions:

Name	
>	Admin
	Architect
>	BIM Manager
	Construction Manager
	Document Manager
	Engineer
	Foreman
	Project Engineer
>	Project Manager
	Superintendent
>	VDC Manager

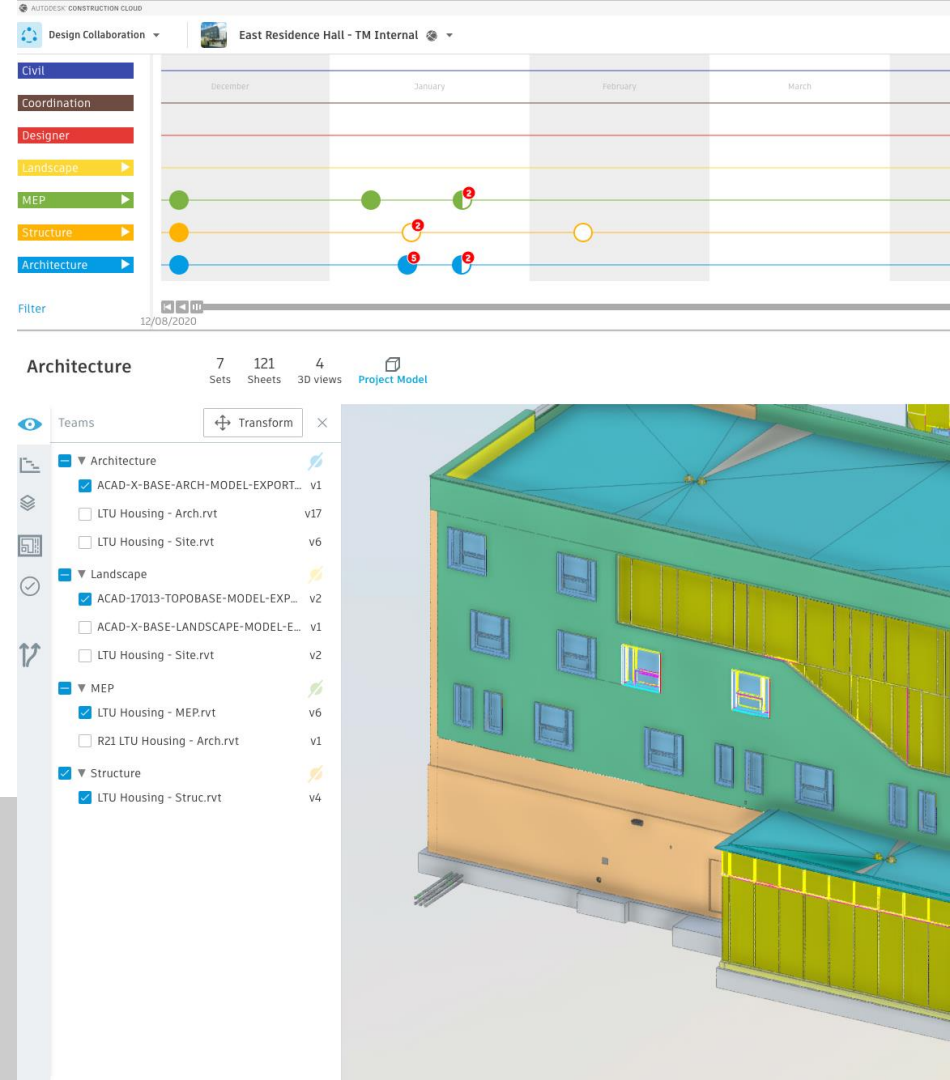
At the bottom right, it says 'Showing 11 permissions'.

Communication

Managed Collaboration

- Manage design exchanges between teams
- Track milestones to ensure accountability
- Analyze 2D & 3D changes

Track project activity, monitor changes, and manage collaboration between teams to best suit your project needs



Communication

Issues, Markups, and More

- Place, assign, and track issues anywhere
- Add private or shared markups and comments
- Create review workflows
- Send transmittals

	Type	Assigned to	Due date	Start date	Placement
	DWG Work to C...	Philippe Bonneau	Dec 18, 2020	Dec 10, 2020	-
	COR Coordinati...	Cesar Escalante	Jan 18, 2021	Jan 14, 2021	-
	CL Clash	Brandon White	Jan 19, 2021	Jan 14, 2021	LTU Housing - Struc.rvt
	DWG Work to C...	Tomasz Fudala	Jan 21, 2021	Jan 14, 2021	-
	D Design	Cesar Escalante	Apr 30, 2021	-	-
iew	D Design	Cesar Escalante	May 27, 2021	-	LTU Housing - Arch.rvt
iew	CL Clash	Philippe Bonneau	May 27, 2021	-	LTU Housing - Struc.rvt
	CL Clash	Philippe Bonneau	May 28, 2021	May 26, 2021	LTU Housing - MEP.rvt
	CL Clash	Philippe Bonneau	May 28, 2021	-	LTU Housing - Struc.rvt
	CL Clash	Philippe Bonneau	Jun 1, 2021	-	LTU Housing - Struc.rvt
	COR Coordinati...	Philippe Bonneau	Jun 2, 2021	-	LTU Housing - MEP.rvt
	CL Clash	Tomasz Fudala	Jun 8, 2021	-	LTU Housing - Struc.rvt
	COR Coordinati...	Philippe Bonneau	Jun 11, 2021	Jun 7, 2021	LTU Housing - Struc.rvt
iew	CL Clash	Brandon White	Jul 30, 2021	-	ACAD-X-BASE-STRUC-M...
	OBS Observati...	Brandon White	Sep 28, 2021	Sep 21, 2021	LTU Housing - Struc.rvt
	COR Coordinati...	Brandon White	Sep 29, 2021	Sep 22, 2021	LTU Housing - Struc.rvt
	COR Coordinati...	Philippe Bonneau	Sep 30, 2021	Sep 20, 2021	LTU Housing - Struc.rvt
	CL Clash	Philippe Bonneau	Oct 1, 2021	Sep 21, 2021	LTU Housing - Arch.rvt
				Sen 29	

Keep your team on the same page and ensure accountability with assignable, version-aware issues and markups together with document control

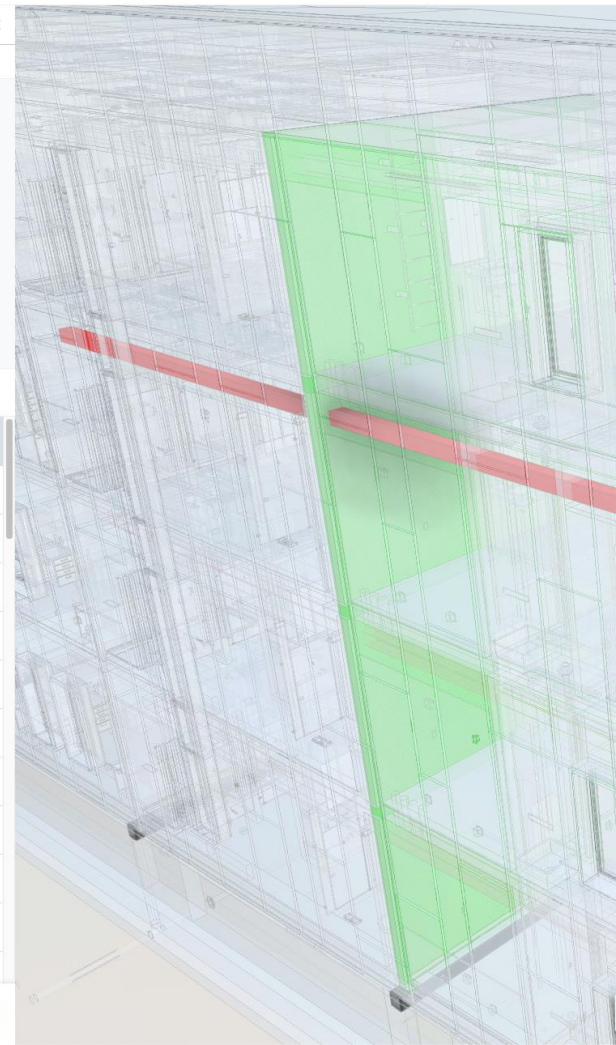
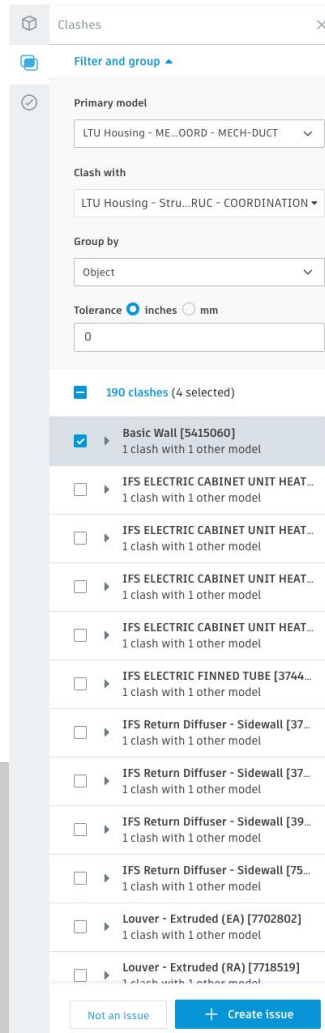
Coordination

Clash Detection

- Automatically detect clashes when models are published/updated
- Group clashes by object
- Create and assign coordination issues

Involve the entire project team in clash detection and resolution with powerful automation, clash grouping, and coordination issue management

Viewing 12 models (Unsaved View) ▾





Collaboration



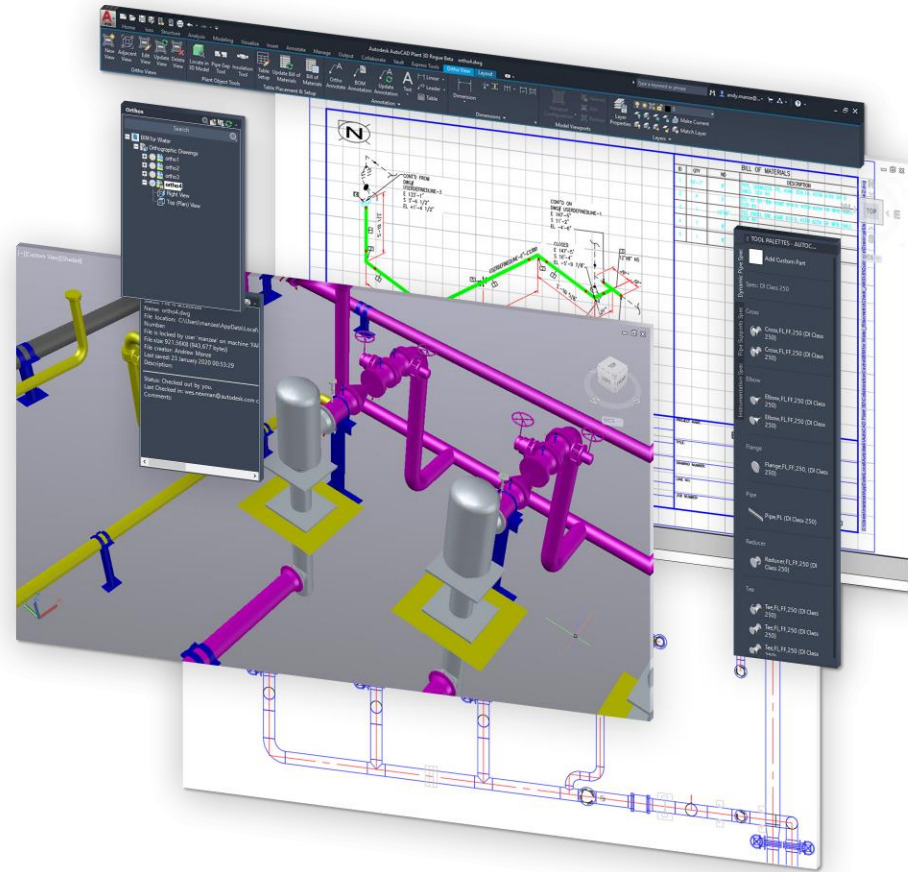
Coordination

Collaboration

Anywhere, Anytime, Anyone

- Plant 3D Collaboration virtually anywhere
- Enable easy and secure user control and permissions
- Automated File Locking

Connects project teams with centralized access to BIM project data in the cloud, with no need for costly IT setup

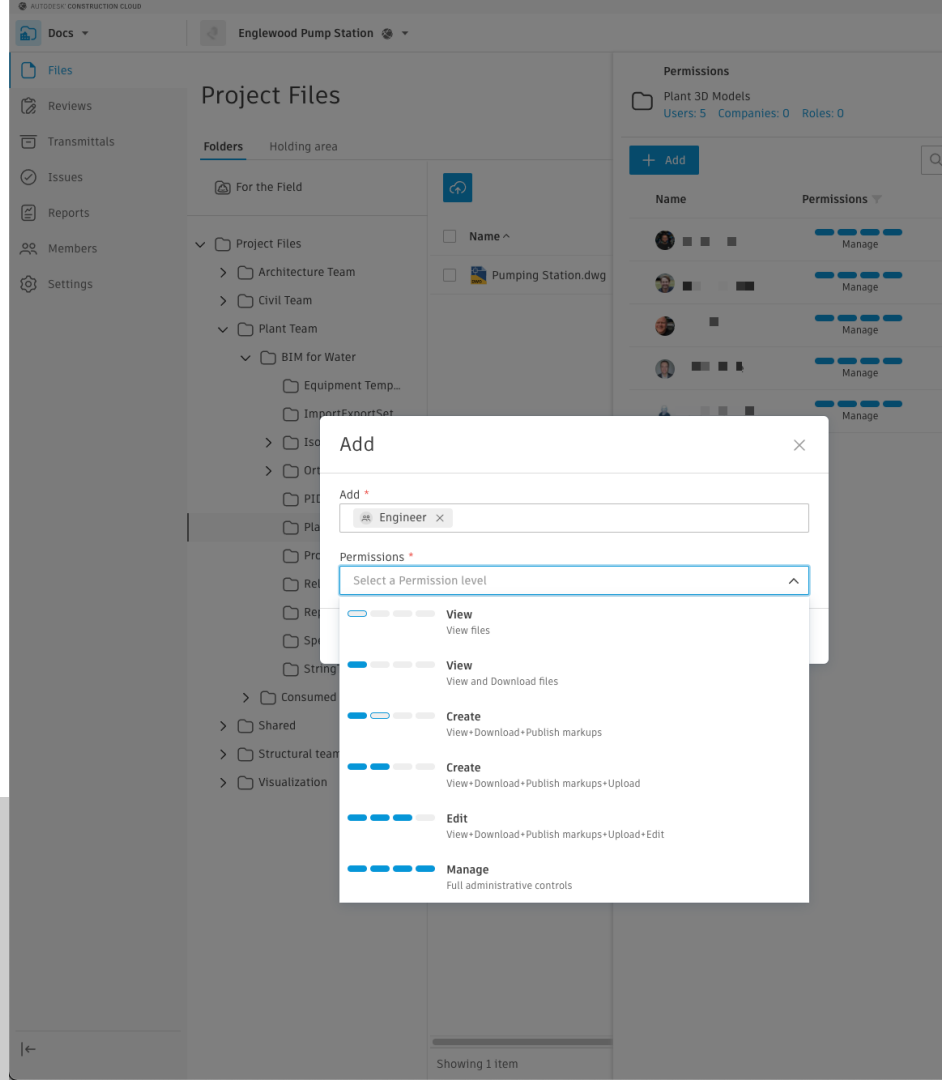


Collaboration

Robust Permissions

- Manage account and project access for internal and external users
- Up to 6 permission levels configurable by user, role or company for projects and folders

Control access and design deliverable exchange with the assurance that the right information is in the right hands throughout your project

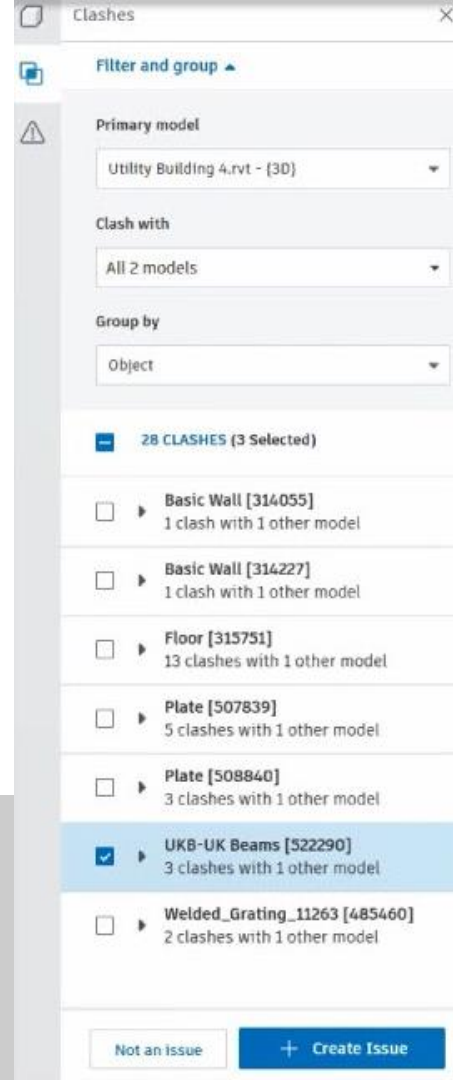


Coordination

Clash Detection

- Automatically detect clashes when models are published/updated
- Group clashes by object
- Create and assign coordination issues

Coordinate issues with multiple disciplines.
Find and resolve issues prior to construction
to save on expensive re-work



150
COUNTRIES

70K
ACTIVE PROJECTS

150K
MODELS IN THE CLOUD

10M
SYNCS

The background features abstract, metallic, geometric shapes. On the left, a series of parallel lines, some dark and some light, create a sense of depth and perspective. On the right, a white, three-dimensional cube is partially visible, with its edges reflecting light. The overall aesthetic is clean, modern, and architectural.

Resources

Resources for Revit Collaboration

- Blog posts
 - [Staying Connected with BIM 360](#)
 - [Best practices for working remotely](#)
 - [Working remotely in Revit](#)
- General Product Help, FAQs, & Resources
 - [Getting Started Guide](#)
 - [Workflow Visualizer](#) – guide for account setup help
 - [Product FAQs](#)
 - [BYOS Policy](#)
 - [Learn-it-yourself courses](#)
 - [YouTube playlist with essential workflows](#)
 - [Advanced workflows in Design Collaboration module](#)
- Free Trial
 - [Sign up for free 30-day trial here](#)
 - [FAQs on product trial](#)
- BIM 360 Security
 - [Security Center](#)
 - [Security Whitepaper](#)
- Customer stories, product releases, & news
 - [Convergence blog](#) for customer stories and news
 - [BIM 360 release notes blog](#)
 - [Connect & Construct blog](#) (for construction articles)
- Forums
 - [BIM 360 Support Forum](#)
 - [BIM 360 Ideas Forum](#)
 - [BIM 360 API Forum](#)
 - [Revit Cloud Worksharing](#)
- Webinars
 - NAMER webinars (territory) [here](#)

Resources for Civil 3D & Plant 3D Collaboration

- Customer stories, product releases, & news
 - [Infrastructure Reimagined blog](#)
 - [BIM 360 release notes blog](#)
 - [Connect & Construct blog](#) (for construction articles)
- General Product Help, FAQs, & Resources
 - [Getting Started Guide](#)
 - [Workflow Visualizer](#) – guide for account setup help
 - [Product FAQs](#)
 - [BYOS Policy](#)
 - [Learn-it-yourself courses](#)
- Free Trial
 - Currently unavailable for Civil 3D & Plant 3D
- BIM 360 Security
 - [Security Center](#)
 - [Security Whitepaper](#)
- Forums
 - [BIM 360 Support Forum](#)
 - [BIM 360 Ideas Forum](#)
 - [BIM 360 API Forum](#)



Q&A

